

Research in Public Transport: UITP Contribution

Umberto Guida

Senior Director, Knowledge and Innovation

I-Share LIFE Event
10 December 2020



➤ UITP AT A GLANCE

We are the only worldwide network to bring together all public transport stakeholders and all sustainable transport modes.

OUR MISSIONS: every day we make a difference for our members and for the wider sustainable transport community.



ADVOCACY & OUTREACH

We engage with decision-makers, international organisations, key stakeholders



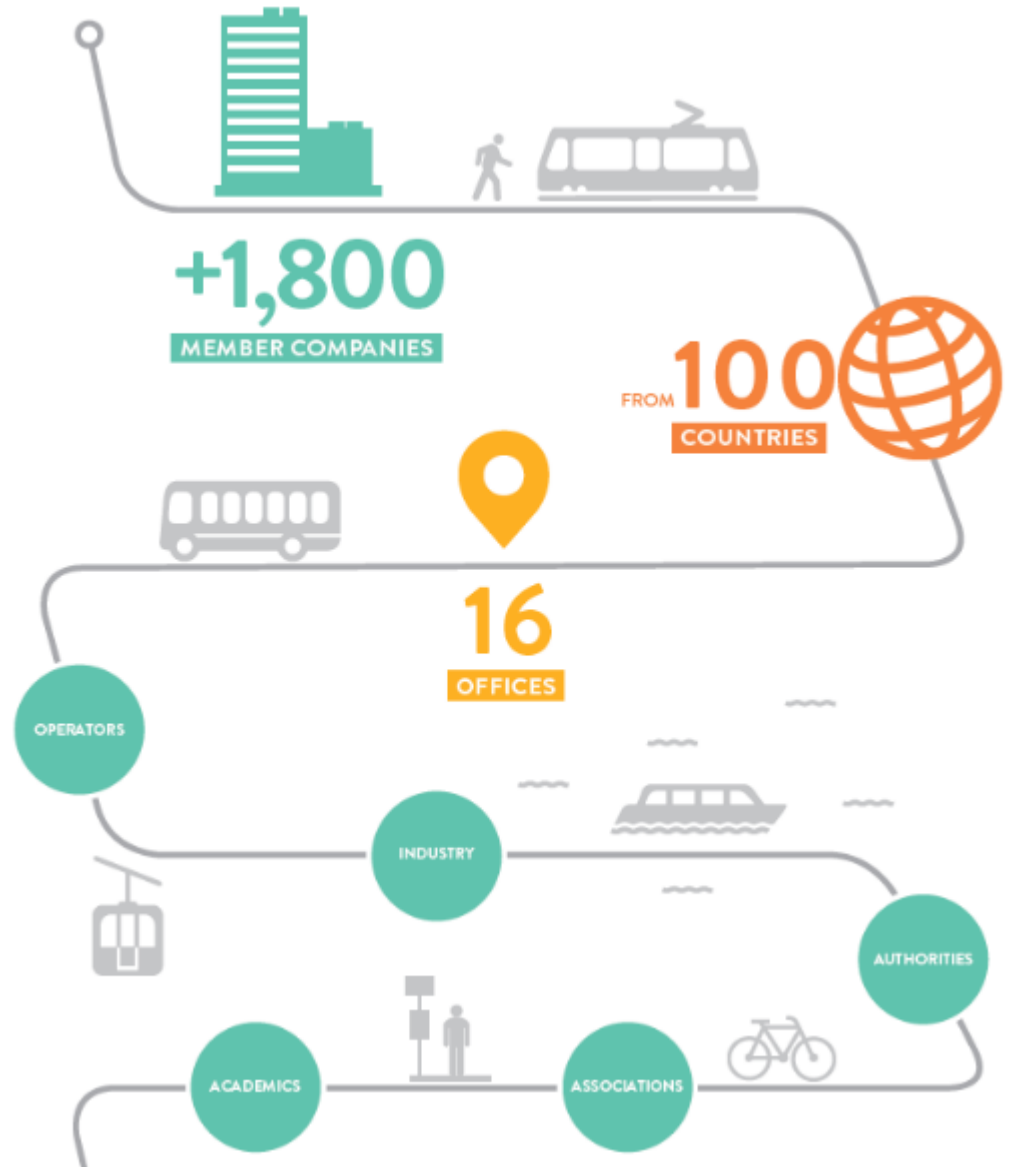
KNOWLEDGE

We generate cutting-edge knowledge and expertise



NETWORK & BUSINESS

We bring people together to exchange ideas, share best practice and forge partnerships



➤ RESEARCH IS ESSENTIAL FOR PUBLIC TRANSPORT

- Niche market - ROI
- Investments need to be carefully planned and will stay for long time
- Negative decisions have an immediate and big impact on the life of citizens
- Financial support for innovation risk sharing is fundamental
- Involvement of many different stakeholders & experts needed





INNOVATIONS ARE RESHAPING ALL HUMAN ACTIVITIES

Role of UITP and Associations

- Identify innovation incoming and anticipate the possible impact on the sector
- Help the design of innovative solutions, answering the needs of the sectors by involving all stakeholders

Objectives

- Help members to assess innovation impact in their business
- Support the decision (not promoting solutions but principles)
- Support the implementation





UITP & PUBLIC TRANSPORT RESEARCH

UITP active in EU-funded projects since 15 years

- First ranked European transport association for funding
- Coordination of & participation in 60+ projects

More collaboration with other Funding Actors

- World Bank, EBRD, EIB...
- But also UITP members (RTA Dubai, MoscowTran?)





K&I KNOWLEDGE PRODUCTION: PROJECTS (2020)

	Urban, Suburban, Regional and Water Bus Transport	Urban, Suburban, and Regional Rail Transport	Mobility Enablers	Mobility Governance	Stakeholders Excellence
Clean Transport	<p>APOLLO (Bus) ASSURED (eBus) eLOBSTER (charge) JIVE, JIVE2 (Fuel Cell) BIOMOTIVE (Biomaterial)</p>		<p>SOLUTIONPLUS (International Cooperation)</p>	<p>CIVITAS-SATELLITE (policy)</p>	
Digital Transformation		<p>MY-TRACK (Trav. Comp) SMARTE (Travel Comp, Maintenance) RIDE2RAIL (Travel Comp, Suburban)</p>	<p>ARIADNA (GNSS) AUTOPILOT (IoT) DATA4PT (IT std) GALILEO4MOBILITY (GNSS)</p>		
CCAM / NMS		<p>SHIFT2MAAS (MaaS)</p>	<p>ARCADE (CCAM) CAD EMPLOY (CCAM) DRIVE2FUTURE (CCAM) SHOW (CCAM) SPACE (CCAM)</p>		
Innovation Ecosystem	<p>2nd Hand Buses (EIB)</p>	<p>TER4RAIL (Research) IP4MAAS (Trav. Comp)</p>	<p>BE-OPEN (Open Science) FUTURE-RADAR (Road Research)</p>	<p>GECKO (Governance) UMII-2 (ecosystem)</p>	<p>PREVENT (Security Procurement)</p>
Urban Mobility		<p>CO-APS (Crowd space)</p>		<p>MOMENTUM (Modelling) MORE (urban space) SUMP-PLUS (rural) SMMR (AEESEAN ME)</p>	<p>TRIPS (Accessibility)</p>





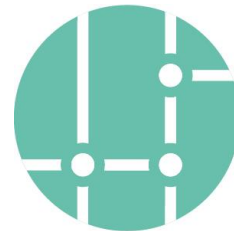
INNOVATION MEGA-TRENDS IN PUBLIC TRANSPORT



**Decarbonisation
of all modes**



**New Mobility
Systems and Services**



**Digital Transformation
of society and
business**



**Safe & Secure
solutions and
Resilience**



**Design of the
City of the Future**



STRENGTH AND WEAKNESSES OBSERVED FOR FUTURE RESEARCH (1)

- Today the **central role of Public Transport in Urban Mobility** is recognized in research environment
- In **Automation**, right importance is given to integrating shared solutions with Public Transport
- **Road Electrification** is looking to operations not yet covered (ex. BRT), evolution of products, tools to finance and support the deployment
- **Hydrogen** is seen as more viable solution for some applications (including rail): focus on green production and cost reduction
- **Digital Transformation** exploring more use of standardised solution and focus on data transmission, protection and governance





STRENGTH AND WEAKNESSES OBSERVED FOR FUTURE RESEARCH (2)

- **Cybersecurity** gaining more and more importance, and space in research
- **New mobility services** well present - but big question remains their governance model
- **Safety** gained unfortunately a lot of visibility: resilience in design of assets, new models of operation, health monitoring
- **Urban Waterborne Public Transport:** a very interesting niche, but unfortunately not well considered
- **Urban Rail research** is at **risk!** Not considered during past H2020, risk to suffer the same in the next Horizon Europe Programme – attention from all actors and Member States is important!





NO SUSTAINABLE MOBILITY WITHOUT RESEARCH

Environment is the key element touching all research aspects.

It will drive the main trade-offs about innovation



**Evolve the business towards environmental sustainability is a must!
Ensure business sustainability during this evolution is essential!**



THANK YOU!

umberto.guida@uitp.org



UITP.org



UITPnews



UITP



UITPofficial



UITPofficial



MyNetwork